

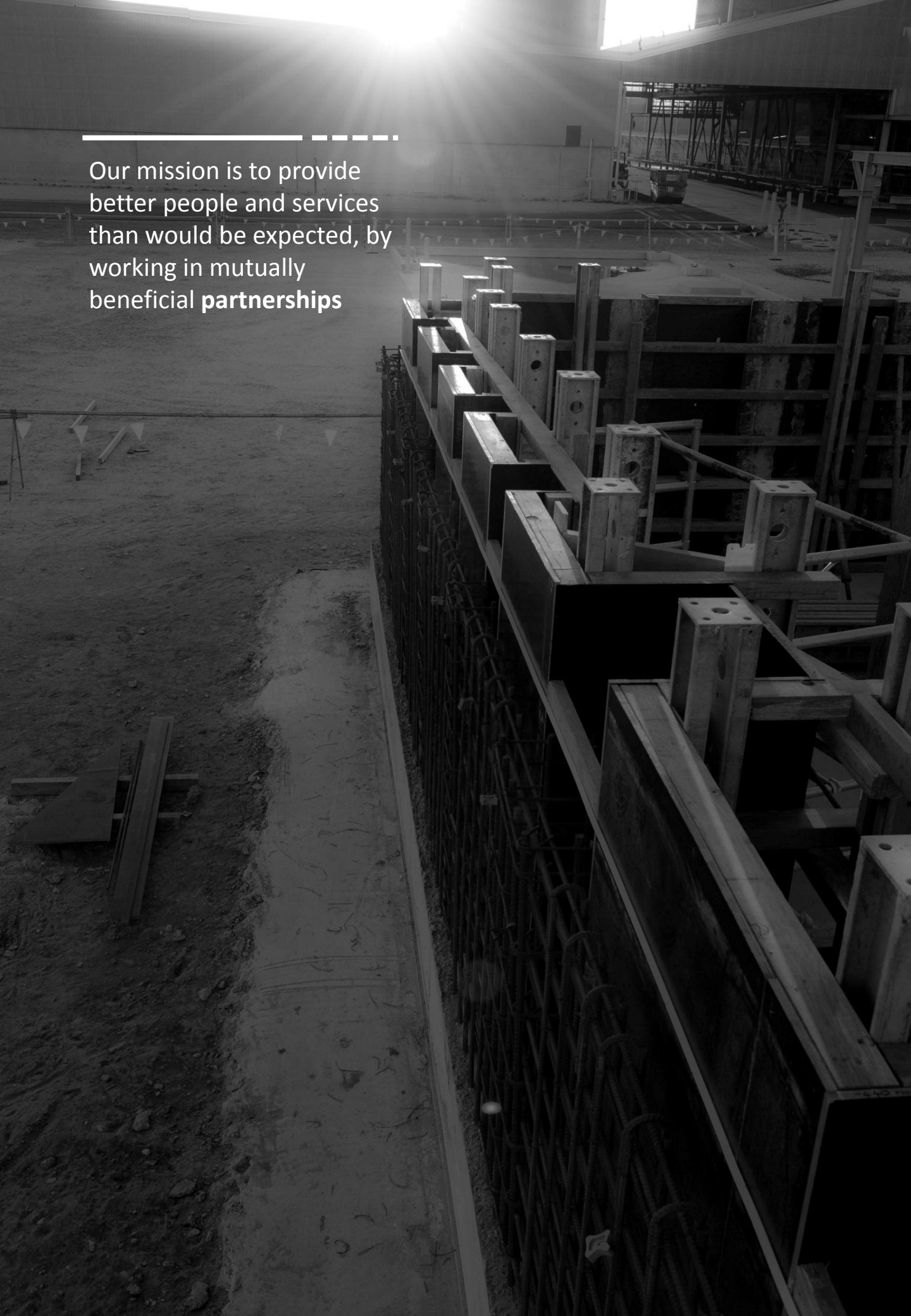
# FREMANTLE CONSTRUCTIONS



## Fremantle Constructions

### CAPABILITY STATEMENT

Small enough to listen, Big enough to deliver



Our mission is to provide  
better people and services  
than would be expected, by  
working in mutually  
beneficial **partnerships**





## what we do

### Concrete supply and placing

We carry out a range of complex pours ranging from freeway bridge decks to 1,000m<sup>3</sup> single pours for major plant foundations in the construction and resource industry.

Our concrete crews have vast experience on major projects where organisation and logistical considerations are a critical requirement in reaching the project volume requirements over expansive work fronts. The crews work closely with the engineering team to ensure quality is maintained and the critical requirements of the specifications are met.

### Steel fixing

Fremantle Constructions has the capability to supply in-house steel fixers to carry out all steel reinforcement requirements either on labour or tonnage rates.

Our steel fixers are experienced in the most complex and challenging structures which require rigorous planning even prior to scheduling to ensure the most safe and cost effective solution are reached every time.

### Tilt panel erection

Fremantle Constructions can supply and install all types of pre-cast components ranging from temporary marine decks to tilt-up wall panels.

We have a mobile casting bed of 300m<sup>2</sup> which can be sent to a site and assembled ready to go within days of mobilisation.

Our logistics framework can ensure prompt delivery to wherever they are required.

### Formwork supply and install

Fremantle Constructions have extensive experience of formwork on a range of complex structures.

We can provide labour for client designed formwork, or draw from our range of suppliers to provide our own design solution.

Our crews have extensive experience in all different types of formwork and false work systems with the majority of our form workers trained to basic scaffold level, EWP and working at heights trained.

### Labour hire

We are able to provide our clients with various labour solutions, ranging from individual personnel hire and work crews, through to total project management. We can provide personnel in the following positions: labourer/TA, machine operators, doggers, rigger/scaffolder, crane drivers, EWP operators, steel fixers, concreters, formworkers, leading hands, supervisors, superintendent, engineers and project managers.

-----  
We pride ourselves on the **quality** of  
our work, the good name and strong  
**relationships** we have established  
within the construction industry.







## about us

Fremantle Constructions Pty Ltd is a civil construction company founded in 2004 by John Schulz. The company is an industry leader in its current field with a strong reputation for quality and reliability.

Where main contractors would tend to employ workers on a project to project basis, we see the value in building our own highly competent team whom we can place on a project at a clients request, then at project completion the team would remain together and move on to the next project. This has resulted in a loyal workforce working efficiently and safely with each other. We believe people are the foundation of our business.

Our specialty is concrete work in Western Australia with our aim to assist multinational companies in the execution of their civil works packages.

Fremantle Constructions workforce ranges from 200 to 250 employees with the majority working on projects in the Pilbara region and a number of projects in the Perth metropolitan region.

The projects we have been involved in have the highest standards of quality and safety in the industry and therefore we adopt the approved policies and procedures as our own. This results in a workforce fully up to date and informed of the legal requirements and client expectations.

With our vast array of experience behind us we feel we are in a prime position to expand on the services we can provide and the clients we do business with.

# our key projects



## Southern Gateway (Perth to Bunbury)

**Location:** Mandurah to Bunbury  
**Our client:** Southern Gateway Alliance  
**Duration:** 14 months

The new Perth to Bunbury Highway (NPBH) was a large scale infrastructure project, involving design and construction of 70.5 km of dual carriageway. The highway was under construction as a single project and extended the dual carriageway from Kwinana Freeway at Safety Bay Road in Baldivis, around the eastern side of the Peel Inlet and Harvey Estuary to join the existing dual carriageway on Old Coast Road at Lake Clifton.

The Highway was constructed from Safety Bay Road to South Yunderup, a distance of some 32 km. The remainder of the route (38 km) will be built as a rural highway, with the ability to upgrade it in the future as traffic demands increase. The project doubles the length of the existing freeway network and provides a high standard inter-regional road link that will improve transport connectivity and road safety.

Fremantle constructions was engaged to build:

- 2 x 220m bridges sub and superstructure.
- 2 x substructure of 220m bridge through a river
- 3 x 70m dual carriageway two span bridges
- 42 x drainage structures, from 10m single 600mm centres Structure through to 130lm 2m height x 12m wide structures





## Kalgoorlie Reservoir

**Location:** Kalgoorlie

**Our client:** Clough

**Duration:** 12 months

The Kalgoorlie 400 megalitre (ML) balancing reservoir helps ensure the reliability of the water supply in Kalgoorlie for residential, commercial and major customers over the peak summer demand periods, and will allow for future growth of the region. The project comprised two 200 ML concrete lined roofed reservoirs, inlet and outlet interconnecting pipe work and valves, a 70 million litres per day pump station and outlet chlorination facilities

Fremantle Constructions designed and implemented lifting frames and drag screeds to allow the pouring of 6,000m<sup>3</sup> of the total 10,000m<sup>3</sup> of concrete on a 30° slope. This was achieved within very strict safety and quality parameters set out by the Water Corporation. We implemented roll out of 12mm and 16mm reinforcing which arrived on site already connected, allowing us to save time and money. We also constructed the pump station which incorporated precast panels.

## Great Northern Hwy, Kimberley

**Location:** Kununurra to Broome

**Our client:** Team Savannah

**Duration:** 11 months

The works of this project included the upgrade of three road bridges along the existing Great Northern Highway in the East Kimberley WA.

Fremantle Constructions provided skilled labour for the highway upgrade between Halls Creek and Kununurra. The works included 3 x 3-span concrete T-roff bridges and the construction of 40 culvert crossing headwalls.

We assisted in the building of all three bridges from the footings, piers to the installation to the t-roff beams, and through to pouring of the concrete decks and approach slabs. We also assisted in numerous miscellaneous drainage structures.







## Gorgon Jetty Pre-assembly

**Location:** Henderson  
**Our client:** SLC (Saipan Leighton Consortium)  
**Duration:** 24 months

The Gorgon LNG Jetty and marine structures will be Australia's longest LNG jetty at 2.1 kilometres in length.

Fremantle Constructions assisted the Saipan Leighton Consortium to build concrete structures, known as caissons, that will be transported to Barrow Island and lowered onto gravel beds placed at intervals on the sea floor to provide a support structure for the LNG jetty at Barrow island.

Fremantle Constructions have been heavily involved in the project since the beginning of construction. We initially constructed the jacking footing slabs. These were the bases that all of the caissons are constructed on and had to support heavy lift jacks that were used to jack caissons from the slab and then assisted in the construction of the caissons themselves.

Other works completed on the site includes:

- Reinforcement fixing
- Formwork construction/metal formwork
- Concrete placement, concreter patching and remedial works.
- Rigging, dogging and crane works



## Yandi Kajina Bridge

**Location:** Yandi Area C  
**Our client:** Laing O'Rourke  
**Duration:** 12 months

This bridge was an incrementally launched double flanged, steel girder bridge, 200m long, approximately 40m high and built on tapered piers using a custom jump up form system. This project required Fremantle Constructions to supply labour with the skill sets such as concrete, formwork, steel fixing and rigging.





## Rapid Growth Project 5 (RGP5) rail duplication north

**Location:** Newman/Port Hedland

**Our client:** MLJV (Macmahon Holdings and Leighton Contractors JV)

**Duration:** 15 months

RGP5 was part of BHP Billiton's phased expansion with capacity to increase to 205 million tonnes per annum. Duplicating the rail infrastructure was a fundamental part of the growth strategy.

MLJV carried out the northern section of the BHP Newman to Port Hedland rail line which contained the construction of 10 new bridges. Fremantle Constructions were identified prior to project kick off as a key component in the delivery of the concrete structures. MLJV were keen to secure many of Fremantle Constructions employees that they knew we could deliver when required. Fremantle Constructions ability to source and mobilise tried and trusted employees were invaluable when programmed dates slipped and more resources were needed at short notice.

We supplied teams of civil constructors to execute the bridge and drain structures along the Northern section of the alignment. We supplied supervisors, leading hands, carpenters, concreters and riggers throughout the entire project.



## AN3 construction project

**Location:** Kwinana

**Our client:** Aecom

**Duration:** 12 months

The AN3 project involves the expansion of the existing Prill Plant at CSBPs Kwinana's central operations

Fremantle Constructions are the main civil contractor on site reporting direct to the EPCM. The works involve bulk and detailed earthworks, complex concrete equipment foundations, drainage and pipework installation and the onsite fabrication and erection of tilt-up panels.

Fremantle Constructions are working under their own safety and quality management systems and procedures. All procurement and on-site engineering is undertaken by the Fremantle Constructions team of Project Manager and Engineers.





## Reid/Alexander and Reid/Mirrabooka interchanges

**Location:** Perth  
**Our client:** Abigroup  
**Duration:** 11 months

The Reid Alexander Interchange project was a design and construct road project within the City of Swan and City of Stirling in the northern metropolitan suburbs of Perth. The project involved a grade-separated interchange at the intersection of Reid Highway over Alexander Drive and Mirrabooka Drive. Each location required the construction of two bridges, east bound and west bound, in high traffic intersections. The project was essential in eliminating two 'black spots' from the Western Australian road network.

Fremantle Constructions provided skilled labour and specialist concreting tools to complete the four bridge deck pours, bridge piers and abutments on the project. Additional works included the erection of MSE panels and all precast noise walls were installed by Fremantle Constructions riggers and crane crew.



## Pluto LNG Site B civil works

**Location:** Karratha  
**Our client:** Leighton Contractors  
**Duration:** 13 months

Fremantle Constructions poured in excess of 30,000m<sup>3</sup> of concrete with our experienced and skilled teams of formworkers, Carpenters, concreters and steel fixers. We carried out these works on both contract and cost plus.

We were responsible for constructing the power generated footings (GTG), the agrow area as well as drainage structures. We then moved on to assist in the installation of culverts, pits and concrete paving.



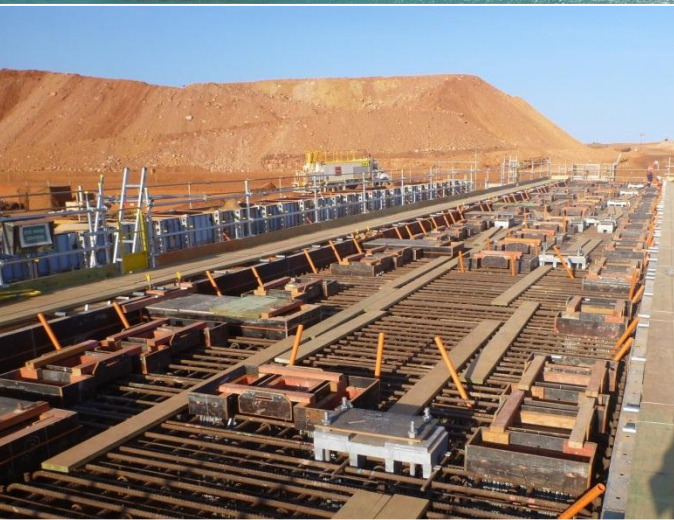


## Gorgon LNG jetty

**Location:** Barrow Island  
**Our client:** SLC (Saipan Leighton Consortium)  
**Duration:** 22 months

The HLF is made from 15 concrete caissons on top of which is concrete decks and bollards used to tie off the vessels. The tug pen breakwater is made of similar caissons, with a concrete cap and walkaway.

Our works have included earthmoving, dogging and rigging, assembly of steel module formwork, steel fixing, concreting and installation of the marine furniture.



## Gorgon LNG civil and underground works

**Location:** Barrow Island  
**Our client:** Leighton Contractors  
**Duration:** 24 months

We are responsible for insitu and precast concrete works throughout various areas, including the gas turbine generators, which have single pours in excess of 1600m<sup>3</sup>. Our scope of works include; walls, bases, pedestals, ring beams, prefabricated footings and slabs. This makes up part of the 150,000m<sup>3</sup> of works.



## Pluto Site B civil works #3

**Location:** Barrup Peninsula  
**Our client:** Georgiou  
**Duration:** 12 months

Fremantle Constructions assisted Georgiou with their concrete works on the Pluto LNG Plant. Works included the construction of concrete structures, installing of concrete panels and all remedial works.

Our works also included:

- Reinforcement fixing
- Formwork supply and install
- Concrete placement, finishing, curing and joint sealant
- Grouting



## Karara iron ore mine

**Location:** Mid west region, 200km east of Geraldton  
**Our client:** NRW Holdings  
**Duration:** 16 months

Fremantle Constructions were the preferred sub-contractor of the NRW site management team to provide formwork and concrete placement labour to supplement their in house team. Fremantle Constructions assistance in periods of peak requirements as well as maintaining a core team, supported NRW in reaching programmed milestones.



## Reid Hwy extension

**Location:** Perth  
**Our client:** Macmahon Holdings  
**Duration:** 11 months

The extension of Reid Hwy involved the construction of the bridge over the Swan River and the major intersection works at Reid/Roe/Great Northern Highways.

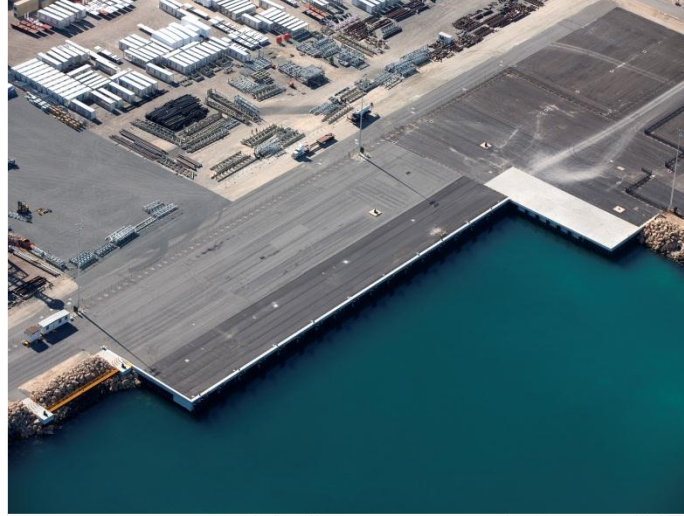
Our works on this project included: form and pour the abutments structures, piers and footings and pour concrete bridge decks on the Swan River Bridge; installation of precast bridge beams; installation of precast panels for bridge abutment at Harris Road and various miscellaneous concrete structures.



## Henderson load out wharf

**Location:** Henderson  
**Our client:** Abigroup  
**Duration:** 6 months

The Service and Supply Base project constructed at the Australian Marine Complex required the construction of a sheet piled roll-on-roll-off wharf including wharf furniture and walkways, earthworks and pavements. The small footprint saw very little working space for contractors and required cooperation on all fronts. Fremantle Constructions was the preferred subcontractor for all reinforced concrete on the project. Our scope included form, reo and pour to the wharf capping beams, heavy duty forklift loading areas and automated truck wash facility.



## Mandurah bypass

**Location:** Perth  
**Our client:** SGA  
**Duration:** 10 months

Fremantle Constructions were engaged to install all the precast tunnel segments. There were 2 x 220m new rail tunnels, 7.5m high 220 pre-cast segments, 15 headwall panels. The tunnel arches were placed using 2 x 280 tonne crawlers and completed in 3 x 56hr round the clock rail shutdowns. We also poured all of the tunnel concrete footings, supplied and installed the formwork for center crash barriers as well as four concrete head walls.



## Mitchell Freeway extension

**Location:** Perth  
**Our client:** Macmahon Holdings  
**Duration:** 20 months

The Mitchell Freeway extension from Hodges Drive to Burns Beach Road was constructed to provide a connection between Perth's CBD and the ever extending northern suburbs.

We were responsible for supplying skilled concrete and formwork teams for bridge and tunnel works, as well as rigging teams to install tunnel arches, noise wall post and panel structures, as well as insitu and precast abutment walls.







## Worsley Alumina Refinery, Efficiency and Growth

**Location:** Collie, WA  
**Our client:** Laing O'Rourke  
**Duration:** 9 months

This scope of works undertook the construction of the primary crushing building including all crushing equipment and screens at Marradong, with a short conveyor to a secondary crusher, and then the 10.5 kilometre overland conveyor to the stockpile at Saddleback.

Fremantle Construction provided supervision and labour for construction of concrete foundations, pedestals and slabs, including the construction of Pinjarra Williams Rd Bridge.



## Port facility upgrade, Anderson Point

**Location:** Perth  
**Our client:** NRW Holdings  
**Duration:** 22 months

The port upgrade at Anderson Point is a vital part of FMGs T155 expansion project.

Fremantle Constructions were engaged to provide all of the concrete and formwork resources to carry out the civil package. Our performance was instrumental in the main contractor being awarded a much larger variation to the project which ensured our works on site increase from an initial three months to an eventual 20 months.



## Perth to Mandurah rail link

**Location:** Perth  
**Our client:** RLJV  
**Duration:** 23 months

The Perth to Mandurah Rail Link project expanded the rail network between Perth and Mandurah. Fremantle Constructions were engaged to assist in the construction of nine bridge structures, tunnels and track slabs. Some of our work on this project included: erection of MSE panels and precast panels; installation of parapets; installation of expansion joints, skirt beams, crash barriers; building of insitu walls, both straight and curved.



## Perth metrorail package E & F

**Location:** Perth  
**Our client:** LKJV  
**Duration:** 23 months

This project incorporated the design and construction of two city railway stations and running directly through Perth CBD in dual bored tunnels. Fremantle Construction was responsible for: Installation of precast panels for abutments and retaining walls; erection of MSC walls; constructing pier protection structures for existing bridges; forming, pouring and tying of underpasses; Leach Hwy and South Street bridge widening's. launching the Canning Hwy Bus Bridge 6m sideways to re align it to the new carriageway and building all new retaining structures, approach slabs, expansions joints and alike.

## How to contact us

p: +61 8 9359 3589

f: +61 8 9453 3182

e: [admin@fremantleconstructions.com.au](mailto:admin@fremantleconstructions.com.au)

w: [www.fremantleconstructions.com.au](http://www.fremantleconstructions.com.au)

P O Box 227, Fremantle WA 6959



**FREMANTLE  
CONSTRUCTIONS**